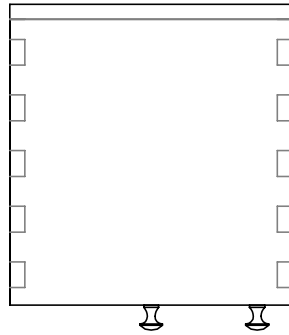
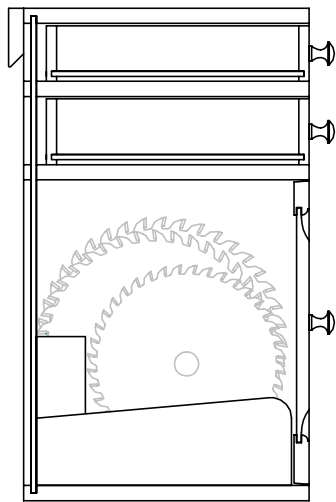


SAW BLADE STORAGE BOX



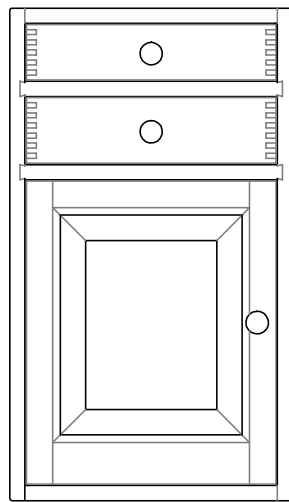
CROSS SECTION VIEW



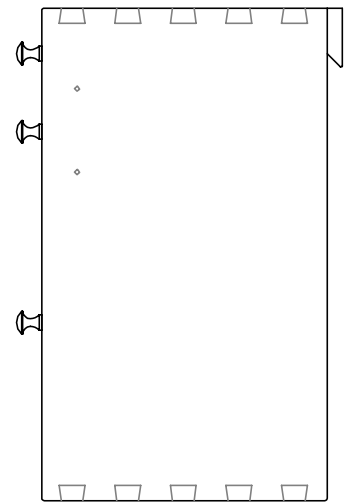
24 3/8



14



14 1/8



TWO DRAWERS FOR TOOL AND ACCESSORY STORAGE AS WELL AS CAPABILITY TO STORE SEVERAL SAW BLADES BEHIND THE DOOR.

AS SHOWN, THE UNIT IS DESIGNED TO BE HUNG ON THE WALL USING A FRENCH CLEAT SYSTEM

BenchMark

SAW BLADE STORAGE CABINET

Philip Dumbalough

PLATE ONE

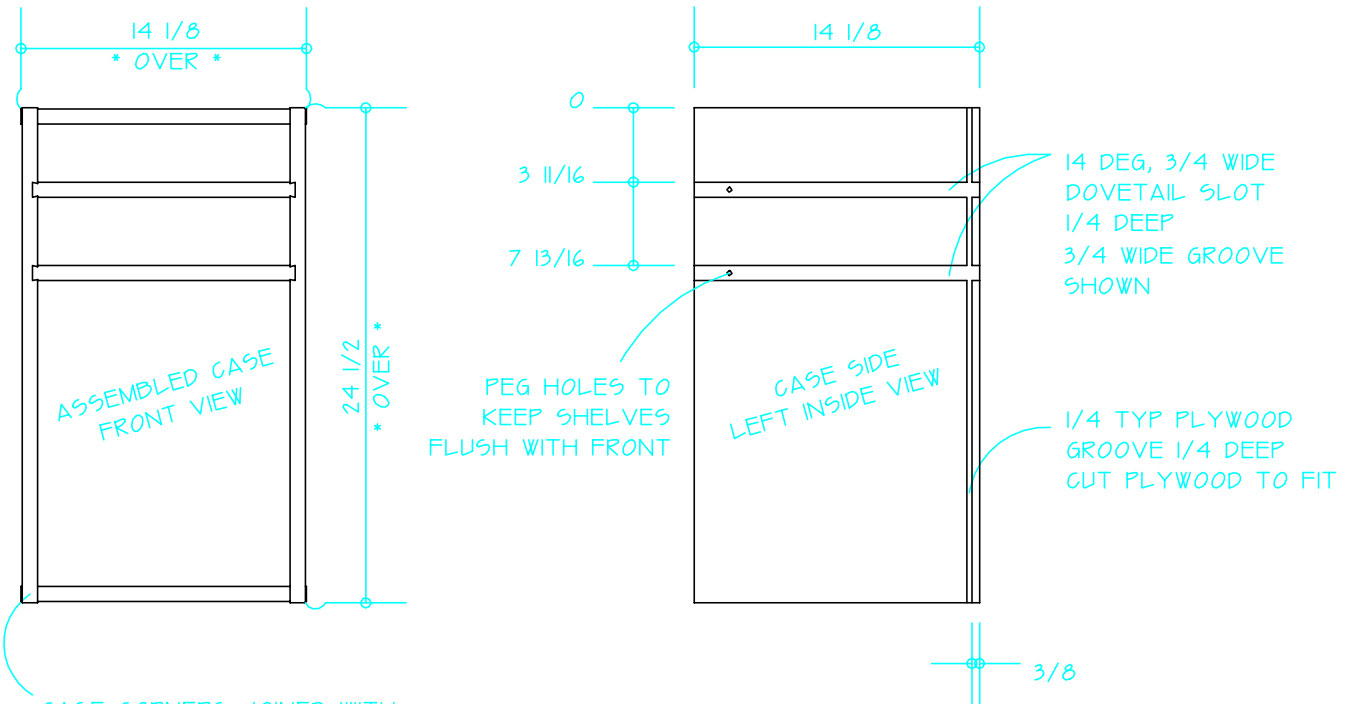
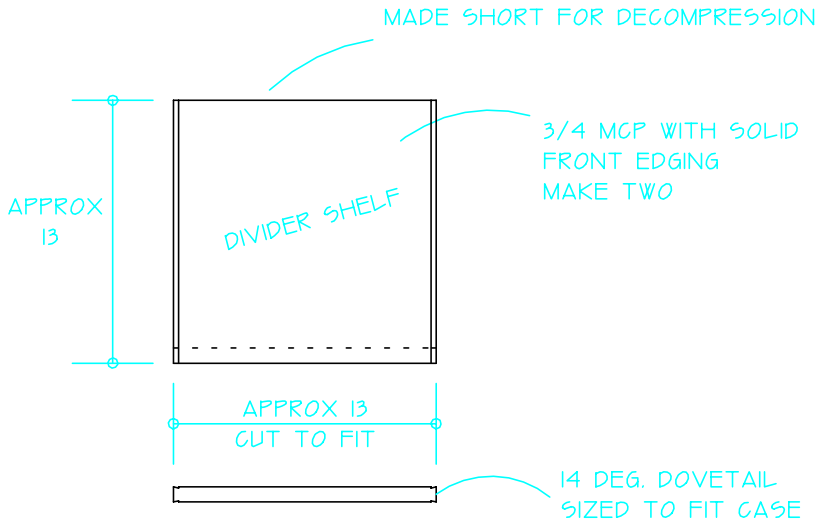
AUG 31, 2001

BLADEBOX.GCD

REV A

<http://benchmark.20m.com>

CASE



CASE CORNERS JOINED WITH 8 DEG DOVETAILS

CASE EXTERIOR ALL 3/4 TYP SOLID STOCK

NOTES

ALL *OVER* DIMENSIONS SHOW PARTS CUT 1/16" OVER-SIZED ON ENDS FOR TRIMS

BenchMark

SAW BLADE STORAGE CABINET

Philip Dumbalough

PLATE TWO

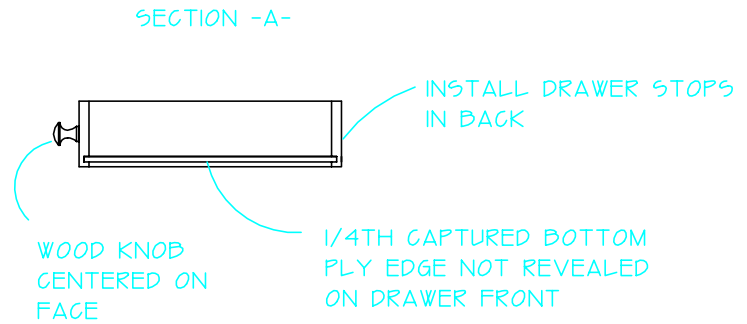
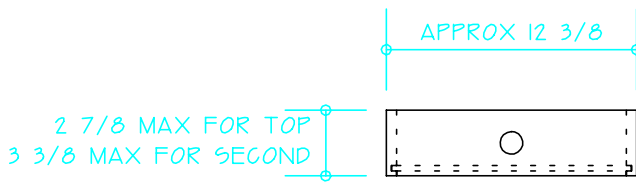
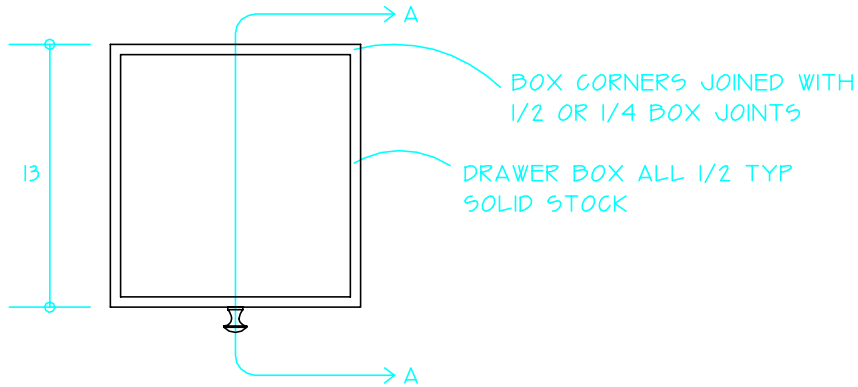
AUG 31, 2001

BLADEBOX.GCD

REV A

<http://benchmark.20m.com>

DRAWERS



NOTES

DRAWER WIDTH DETERMINED BY CASE OPENING LESS CLEARANCE ALLOWANCE

DRAWER HEIGHT DETERMINED BY CASE OPENING LESS CLEARANCE ALLOWANCE

BenchMark

SAW BLADE STORAGE CABINET

Philip Dumbalough

PLATE THREE

AUG 31, 2001

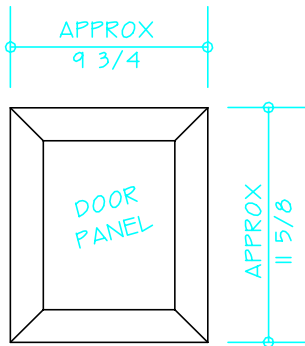
BLADEBOX.GCD

REV A

<http://benchmark.20m.com>

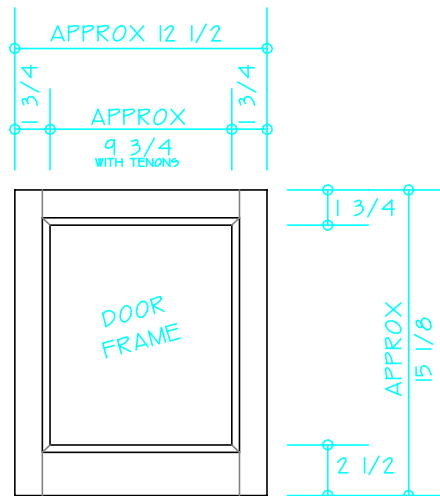
DOOR

TOP SECTIONAL VIEW



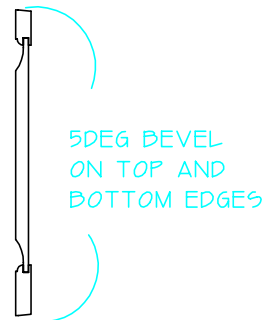
DOOR PANEL MADE
OF $\sim 5/8$ STOCK

DOOR SIZED $1/8$ SHORTER
AND $3/16$ NARROWER THAN
DRAWER GROOVE



DOOR FRAME MADE OF
 $3/4$ TH STOCK WITH
THUMBNAIL COPE & STICK

SIDE SECTIONAL VIEW



NOTES

DOOR SIZE DETERMINED BY CASE OPENING
ALLOW $1/16$ CLEARANCE AROUND EDGES

BenchMark

SAW BLADE STORAGE CABINET

Philip Dumbalough

PLATE FOUR

AUG 31, 2001

BLADEBOX.GCD

REV A

<http://benchmark.20m.com>